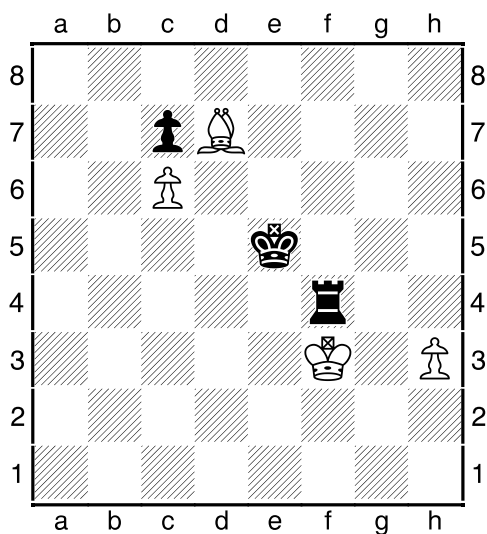
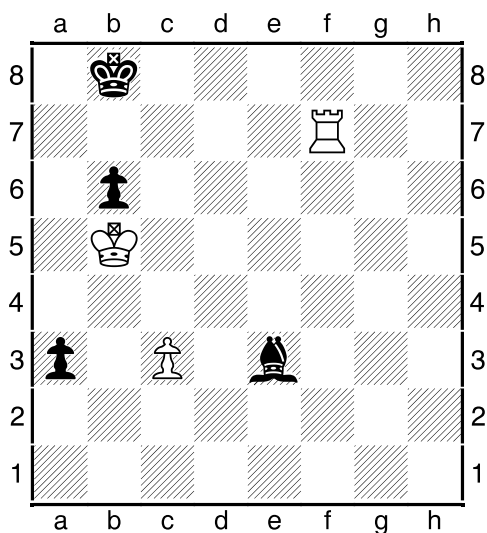


## Term 2 Endgames with Carl Gorka

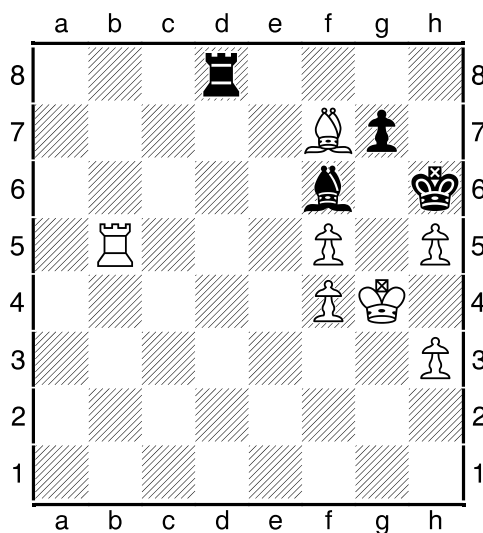
### Question 1



Explain the differences between the 2 positions above. Can either side expect to win either of these positions?

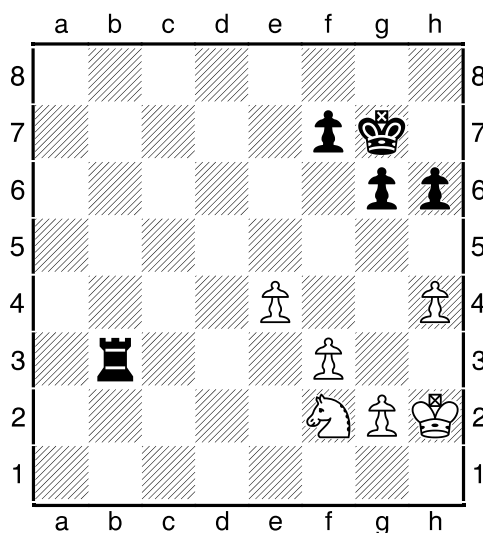
It is Black to move in the first diagram (does this make a difference to the result?) and White in the second.

### Question 2



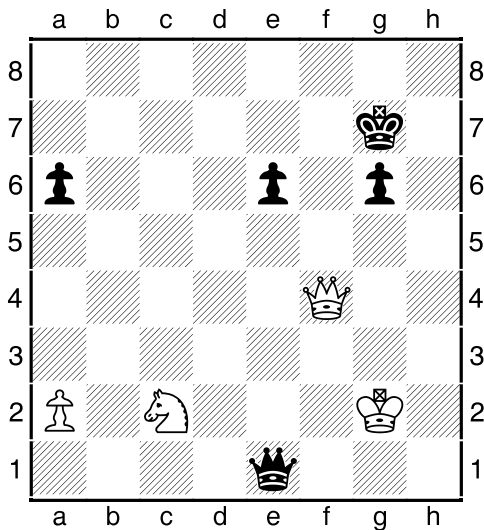
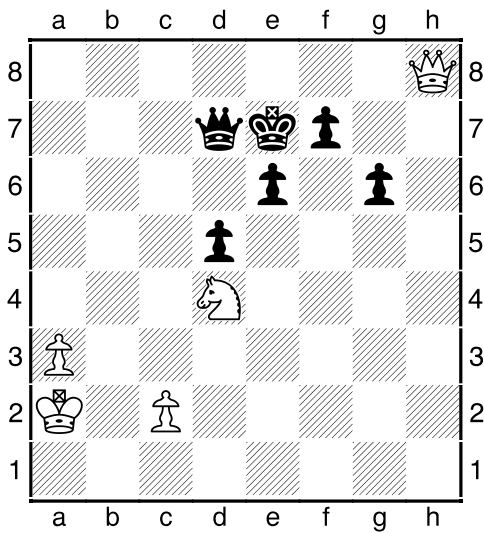
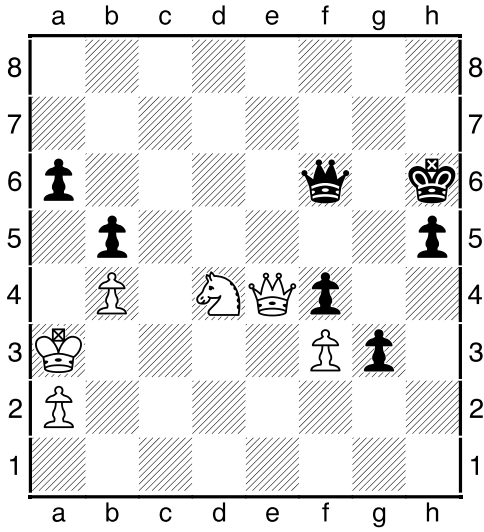
Is it possible for white to win this position? How might he go about it?

### Question 3



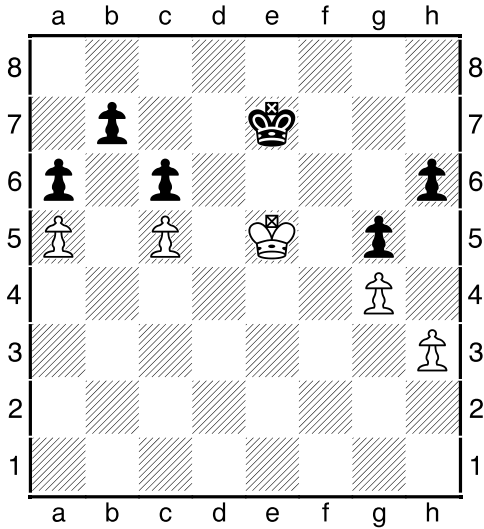
What should be the result from this position (Black to move)? What would you be trying to do if you were black, or white?

Question 4



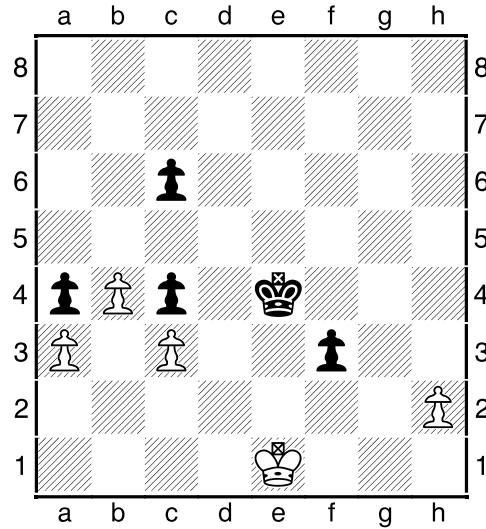
In which of these 3 positions would you prefer to have the pawns, and in which would you prefer the knight? Find winning plans and continuations for your favoured side always assuming the best defence for your opponent.

Question 5



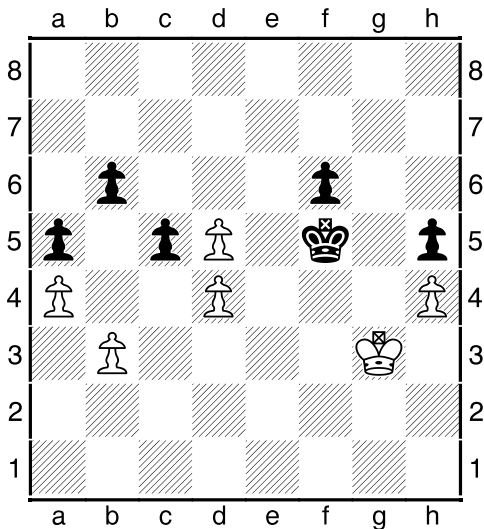
Black to play, what should be the result?

Question 7



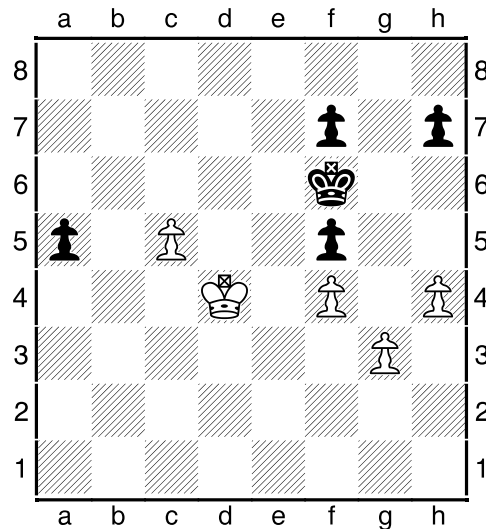
Black to play what should be the result?

Question 6



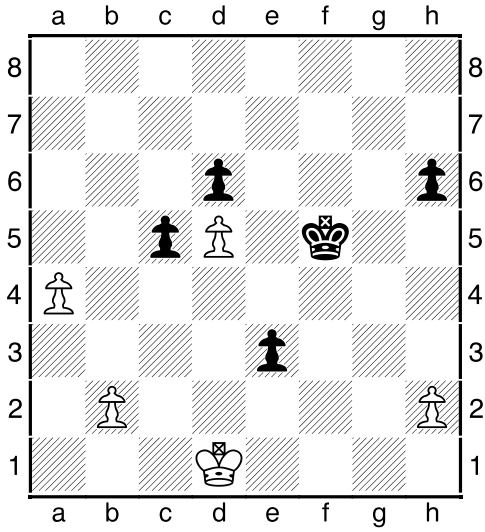
White to play, what should be the result?

Question 8



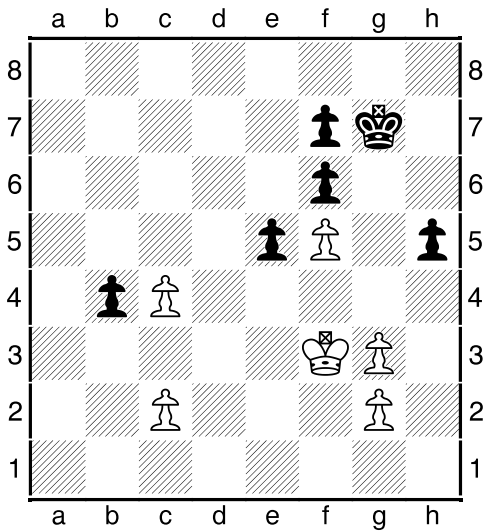
Black to play what should be the result?

Question 9



Black to play what should be the result?

Question 10



Black to play what should be the result?