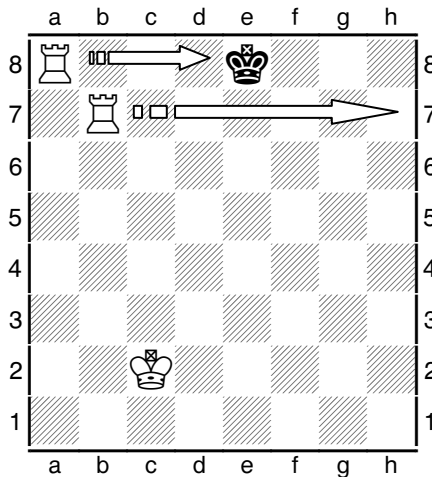


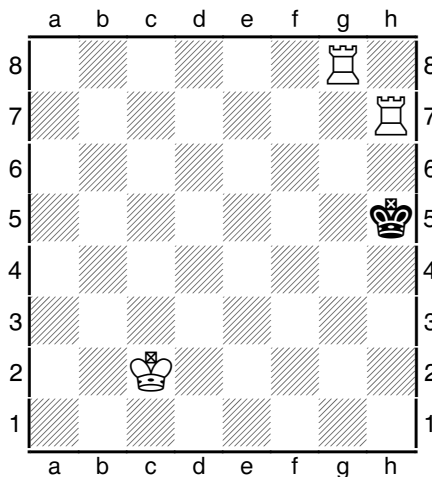
Electric Fence Checkmate

It is all very well knowing lots of good opening strategies (how to position yourself well) and good middle-game strategies (enabling you to take out most of your opponents pieces), but even after you've captured your opponent's entire army you still have to deliver a checkmate.

The most common checkmate in the world is the Electric Fence strategy. This is a pattern which you can remember and use in many situations.



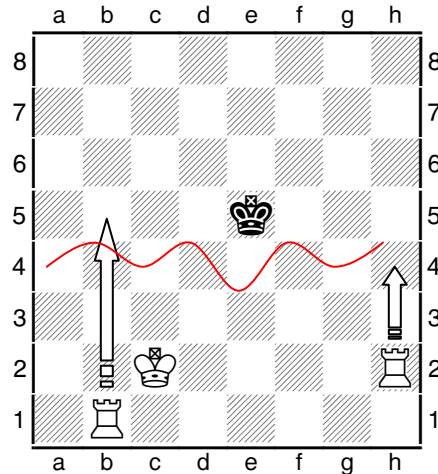
This is the final position for the basic **Electric Fence Checkmate**.



Notice that this works when the King is on **ANY** edge of the board.

How to Reach That Position

1. Setup an Electric Fence (do not give check)
2. Use your Other Rook to **ZAP** the King.
3. Never Cross The Beams!



First setup the Electric Fence by moving **1.Ra4**. This keeps Black locked in the back half of the board. No matter what Black does the next move can be **2.Rb5**, forcing the King backwards. Repeat the pattern down the board.

BEWARE if the enemy King is close enough to **“Unplug”** your electric fence.

