

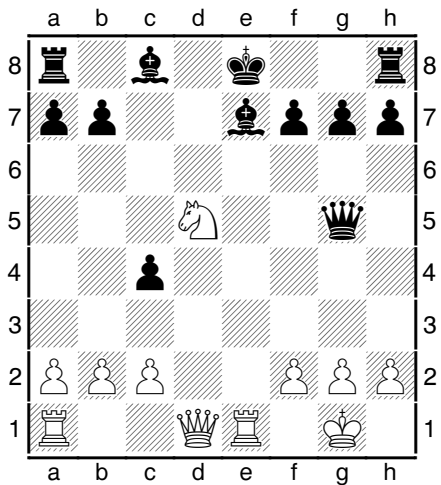
Checkmate in 3 moves

Checkmate comes from the ancient Persian words '*Shah*', meaning King and '*mat*' meaning dead. Literally translated it means 'the King is dead'.

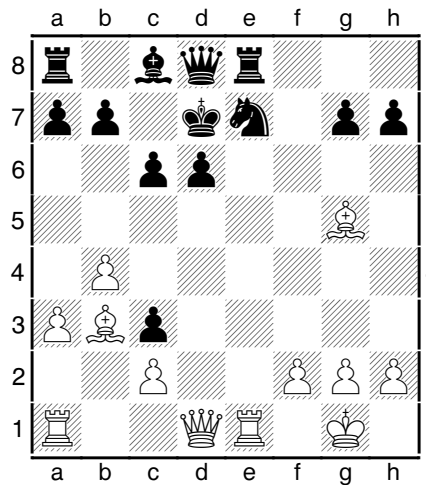
Remember – a checkmate must first be a check (the King is attacked). Then you need to make sure the King cannot escape from check by any of:

1. KILL Capturing the piece that is delivering check
2. BLOCK Blocking the check with another piece
3. RUN AWAY Moving away from check

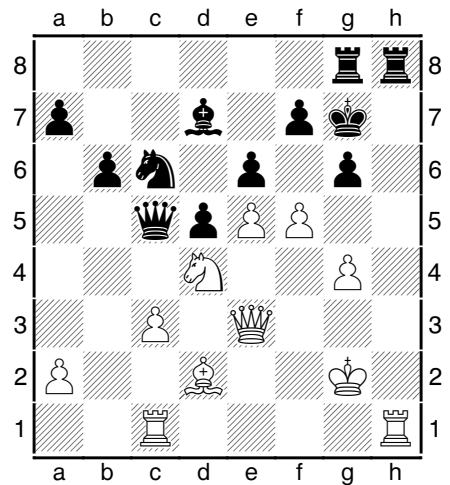
In the following positions it is White to play and checkmate in 3 moves.



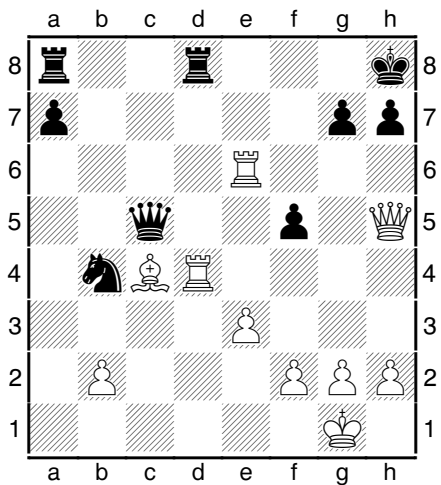
White to move



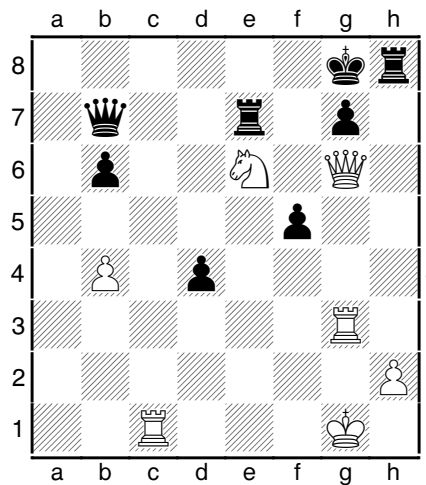
White to move



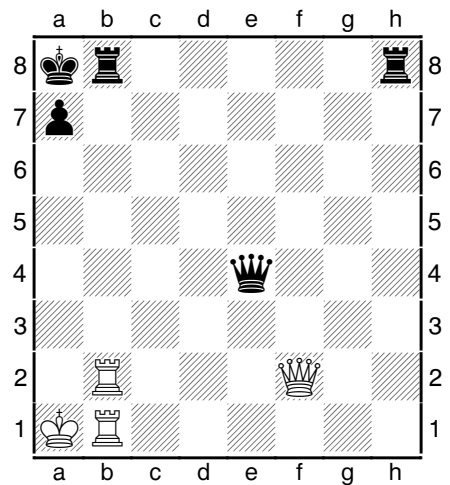
White to move



White to move



White to move



White to move

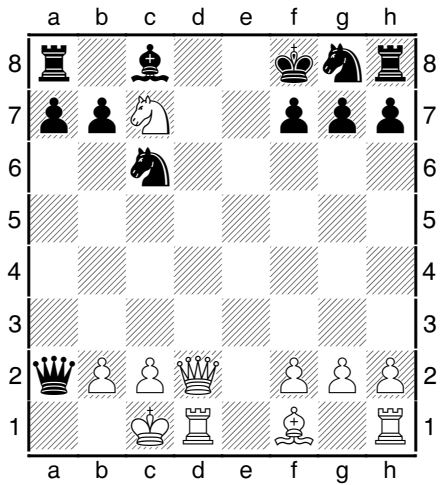
Checkmate in 3 moves

Checkmate comes from the ancient Persian words '*Shah*', meaning King and '*mat*' meaning dead. Literally translated it means 'the King is dead'.

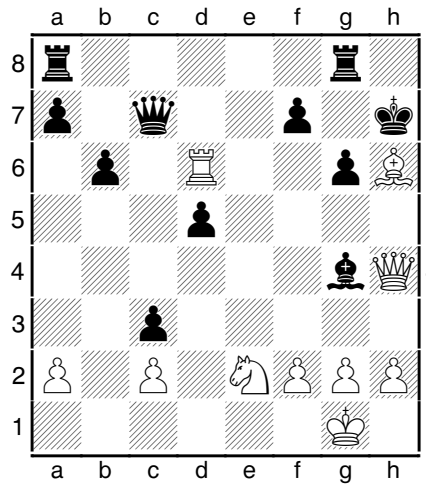
Remember – a checkmate must first be a check (the King is attacked). Then you need to make sure the King cannot escape from check by any of:

1. KILL Capturing the piece that is delivering check
2. BLOCK Blocking the check with another piece
3. RUN AWAY Moving away from check

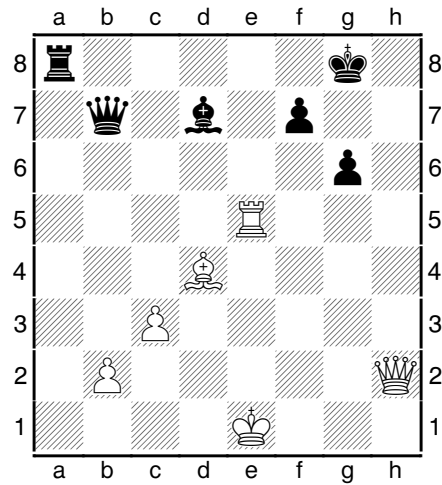
In the following positions it is White to play and checkmate in 3 moves.



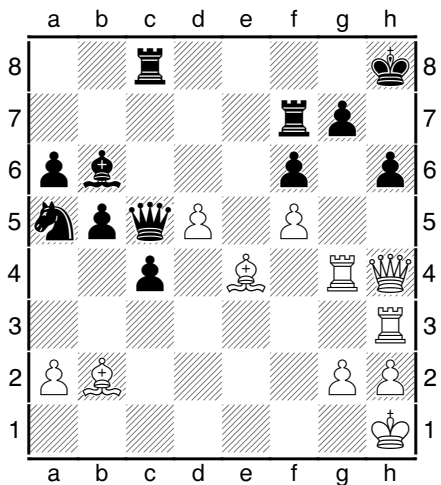
White to move



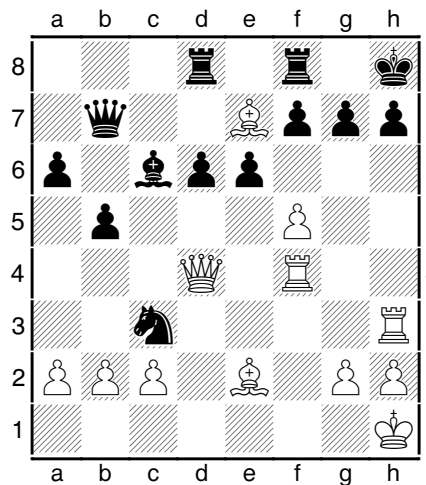
White to move



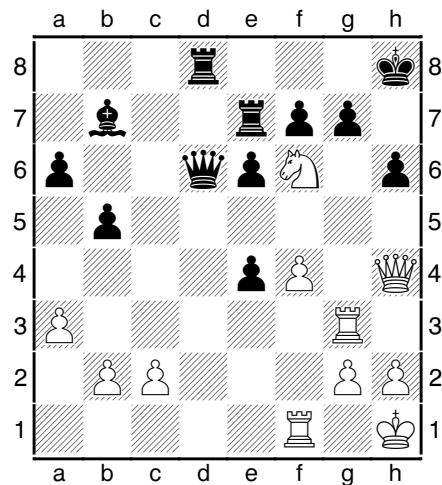
White to move



White to move



White to move



White to move

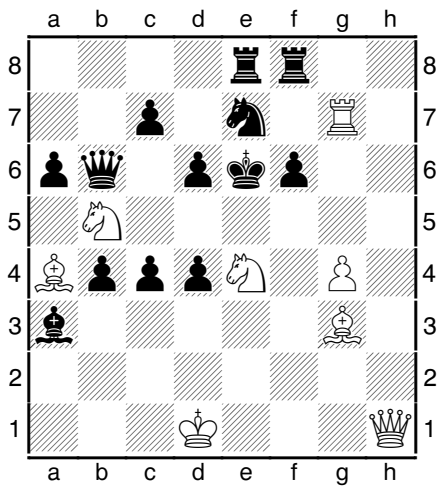
Checkmate in 3 moves

Checkmate comes from the ancient Persian words '*Shah*', meaning King and '*mat*' meaning dead. Literally translated it means 'the King is dead'.

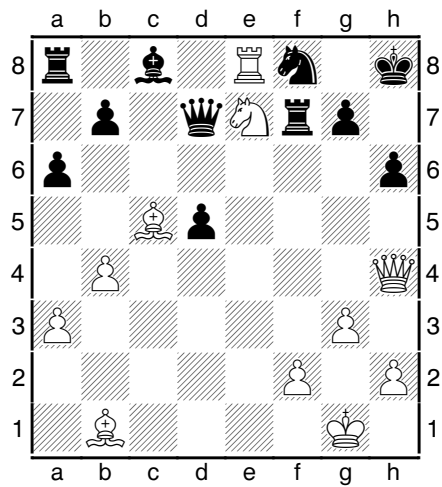
Remember – a checkmate must first be a check (the King is attacked). Then you need to make sure the King cannot escape from check by any of:

1. KILL Capturing the piece that is delivering check
2. BLOCK Blocking the check with another piece
3. RUN AWAY Moving away from check

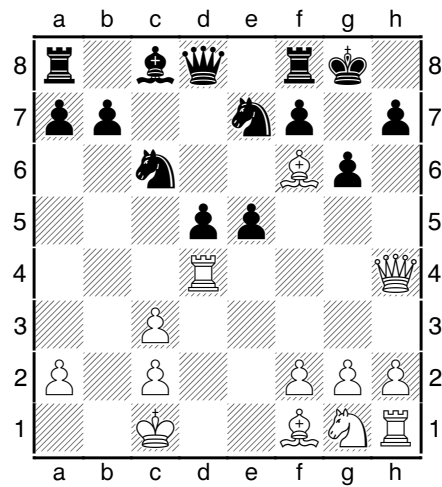
In the following positions it is White to play and checkmate in 3 moves.



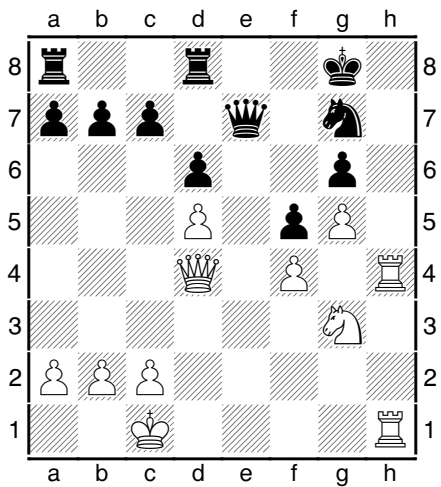
White to move



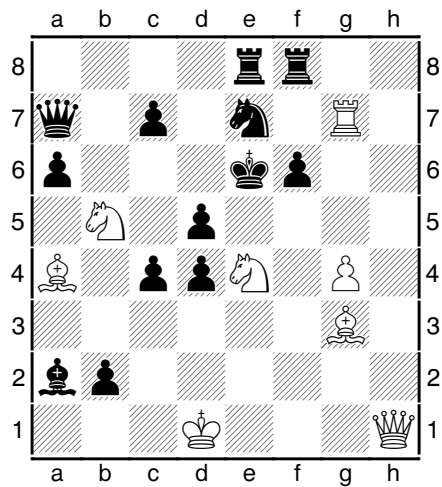
White to move



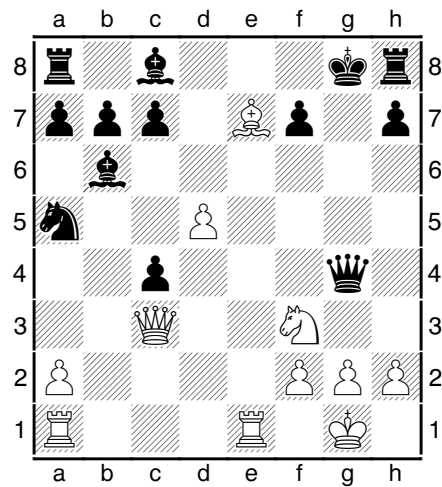
White to move



White to move



White to move



White to move

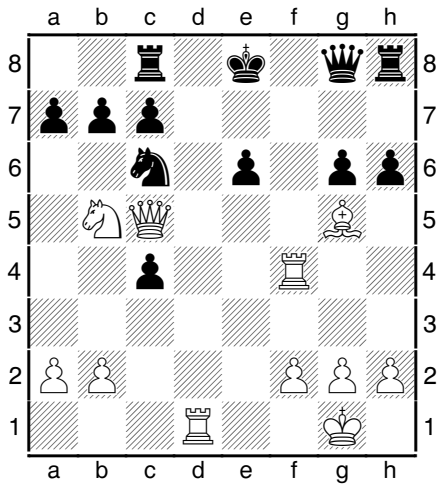
Checkmate in 3 moves

Checkmate comes from the ancient Persian words '*Shah*', meaning King and '*mat*' meaning dead. Literally translated it means 'the King is dead'.

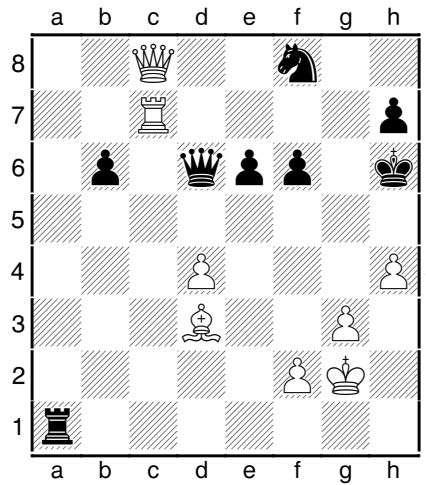
Remember – a checkmate must first be a check (the King is attacked). Then you need to make sure the King cannot escape from check by any of:

1. KILL Capturing the piece that is delivering check
2. BLOCK Blocking the check with another piece
3. RUN AWAY Moving away from check

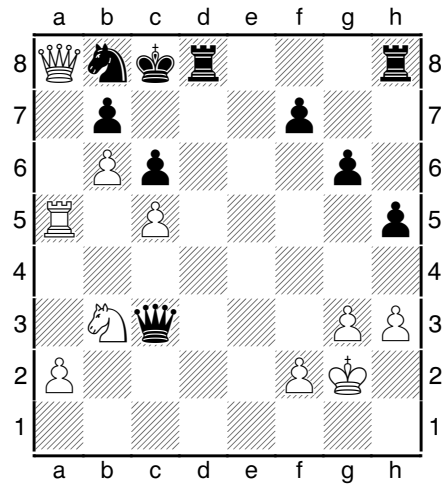
In the following positions it is White to play and checkmate in 3 moves.



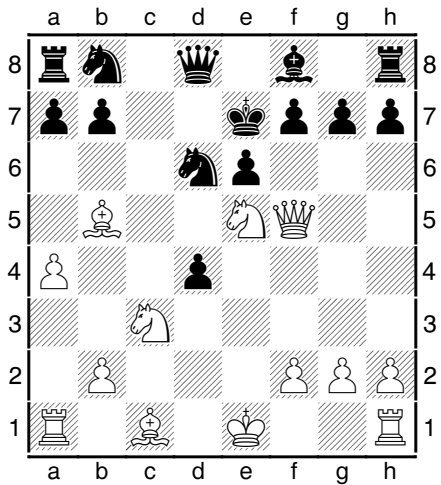
White to move



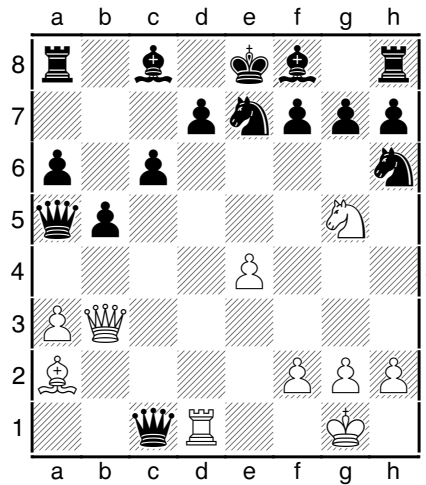
White to move



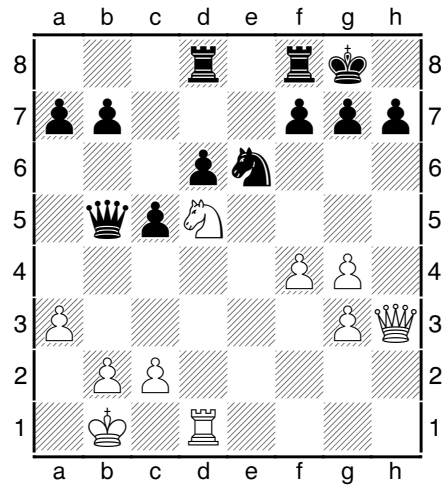
White to move



White to move



White to move



White to move

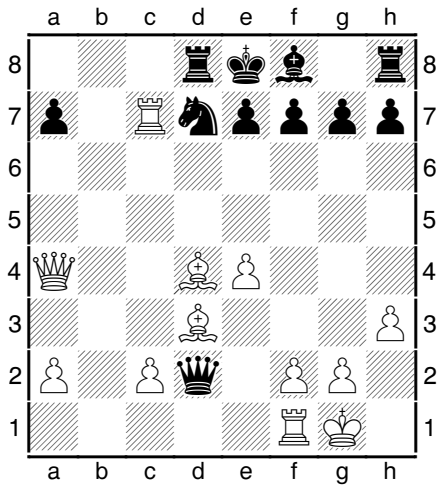
Checkmate in 3 moves

Checkmate comes from the ancient Persian words '*Shah*', meaning King and '*mat*' meaning dead. Literally translated it means 'the King is dead'.

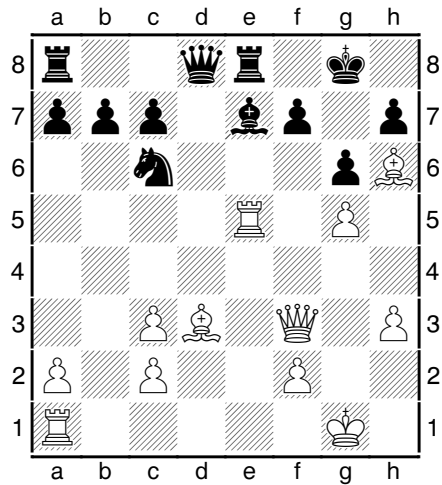
Remember – a checkmate must first be a check (the King is attacked). Then you need to make sure the King cannot escape from check by any of:

1. KILL Capturing the piece that is delivering check
2. BLOCK Blocking the check with another piece
3. RUN AWAY Moving away from check

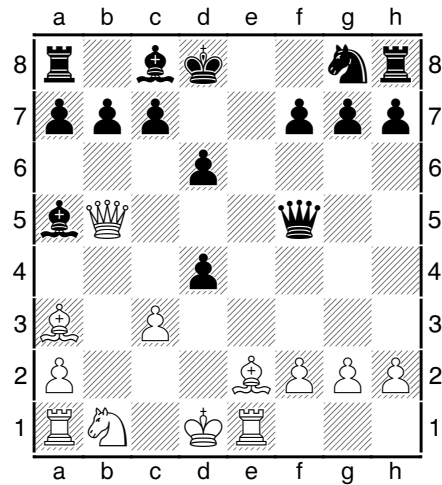
In the following positions it is White to play and checkmate in 3 moves.



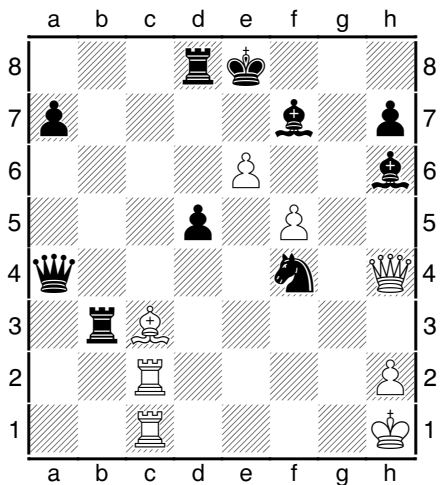
White to move



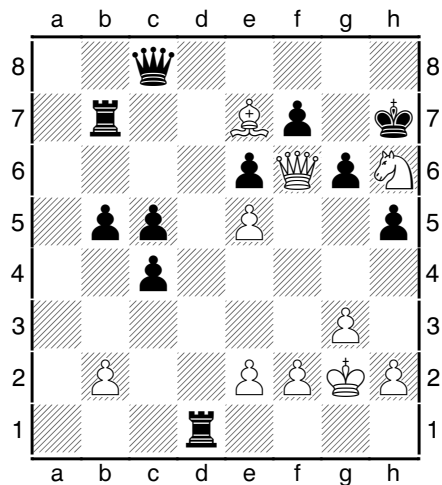
White to move



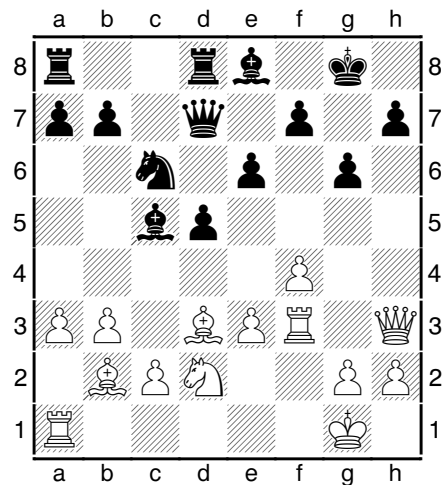
White to move



White to move



White to move



White to move